

THE
DANFORTH
MUSIC HALL

THEDANFORTH.COM

NOV 4 CHANCE THE RAPPER
NOV 5 MATT NATHANSON
NOV 8 RED BULL THRE3STYLE
NOV 9 HANSON
NOV 14 DARK STAR ORCHESTRA

THE
DANFORTH
MUSIC HALL

TONIGHT
JOEL PLASKETT
BUY TICKETS NOW
WWW.TICKETMASTER.CA



GENERAL INFO

CAPACITY 

**GENERAL
ADMISSION: 1427** TOTAL

1058 main floor, 90 mezzanine, 279 balcony

SEATED: 1145 TOTAL

776 main floor, 90 mezzanine, 279 balcony



BOX OFFICE & TICKETING

Street Level Box Office open 1.5 hours prior to door time. Sold through The Danforth Music Hall's account with **TICKETMASTER**.

PAST EVENTS



BILLY TALENT



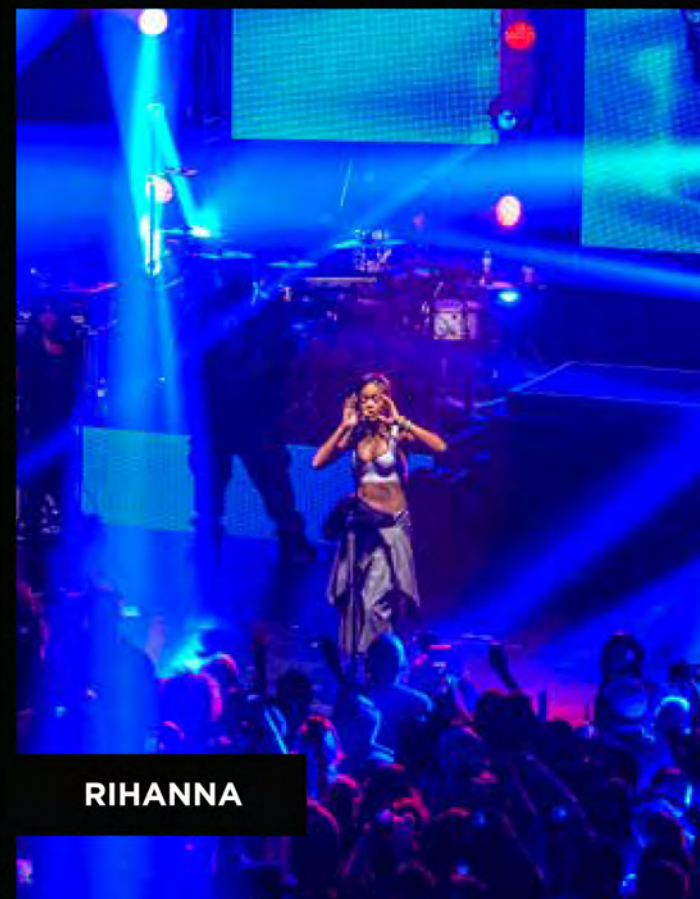
JULY TALK



JUSTIN BIEBER



ORVILLE PECK



RIHANNA

OUR FACILITIES

BARS

4 bars on Main Floor, Full bar on 2nd floor

FULLY LICENSED VENUE

ACCESSIBILITY

There are no steps at entrance.

Accessible seating is available

*** THERE ARE NO ACCESSIBLE WASHROOMS

TERMS

Intermission: Mandatory or Penalty

\$2500 + HST Deposit

Merchandise Rate: 20% House 80% artist on soft goods

50% deposit on Signing Venue License Agreement

Damage Deposit required

\$5,000,000 of Public Liability Insurance

Advertising available through Social Media,

Mailing List, and Venue Lightbox

LOAD AREA

- There is a 24 hour Motor Coach zone on the south side of Danforth Ave, Right in front of the venue. Motorcoach zone is 90' long and 7' wide. Please Note that there is a bike lane between Bus parking and sidewalk!
- Venue does not have on site parking. Street parking or lot parking is the responsibility of the promoter.
- Load in is through front door. Push through lobby into main room up a ramp to the stage. Push from front door to stage is 100'

WIRELESS THROUGHOUT

DRESSING ROOMS

- **UPPER 1** 6 person, Fridge, Serving Area, 2 couches, 3 tables, 12'x12'
- **UPPER 2** 1 person, Private Shower, 8' x 7'
- **LOWER 1** 4 person, couch, table, mirror, 11' x 6'
- **LOWER 2** 2 person, chairs, sink, mirror, 9' x 7'
- **LOWER 3** 2 person, chairs, 9' x 5.5'

TOUR PRODUCTION

- Backstage 9' x 6'

TOUR MANAGER / PROMOTER

- Backstage 8' x 5'

BACKSTAGE

- 2 Private Washrooms with 2 sinks

ROOM SPECS

STAGE SPECS

FIRE CURTAIN LINE 11' UPSTAGE OF STAGE SKIRT

Wood Vaneer House / Stage Depth = **32' 1"**

Width @ Proscenium = **39' 7"**

Proscenium Height = **24' 4"** @ Centre

Apron Width = **49' 3"** / Apron = **8'**

Stage skirt to center seat (pit) = **5'**

Stage skirt to seat shortest distance = **3'**

Stage Width Total Back Wall width = **49' 4"**

Pipe #3 to Back Wall for Vid Projector = **18' 7"**

Grid Height = **58'** / Rigging = Yes, 3 fly pipes

2 x **16"** Box Truss on 1/2 Ton Motors

Voltage = 120/208

HOUSE SPECS

Stage Skirt To F.O.H = **70' 3"**

House Width at Stage **50' 5"**

Mid House Width **72'**

House Width at F.O.H **72' 3"**

House Height @ C **27' 8"**

1 x FOH **16"** Box Truss
on 2 x 1/2 Ton Motors

ELECTRICAL - STAGE RIGHT

Lighting = **200 amp** service, 3 phase

Audio = **100 amp** service, 3 phase

Additional **100 3 phase** available

Voltage = **120/208**

Cycles = **60**

AUDIO SPECS



MAIN PA SYSTEM

- Console - Avid Profile
- 24 x L'Acoustic KARA (12 per side)
- 8 x L'Acoustic SB218 (4 per side)
- 2 x L'Acoustic Arc Wide front fills
- 4 x Adamson CB-1 Balcony Fill
- 2 x Crown CE4000

⚡ POWER

- 100 Amp 3 Phase

GEAR

- 15 x K&M Tall Boom Mic Stands
- 15 x K&M Short Boom Mic Stands
- 3 x Round Base Straight Mic Stands
- 5 x Clear Com Headsets

STAGING

4 x 4' x 8' Risers
6", 12", 16" Legs

MONITORS

- 1 x Avid SC48 Digital Mixing Console
- 12 x L'Acoustic x15 monitors
- 12 x Mixes incl. Listen on LA 8 Amplifiers
- Yorkville Self-Powered Single 18" Drum Sub
- 48 Ch Veam 3-way Isolated Split Snake System
- 6 x 12 Channel CPC Sub-Snake Boxes (5 Cables)
- Sidefills: 2 x PRG 2x18C, 2 L'Acoustic ARCS

SOUND LEVEL LIMITS

The venue has a VERY STRICT 11pm Sound Curfew
The Danforth Music Hall has sound level limits which are measured at FOH: 110dBc or 103 dBa, whichever is lesser.

Due to the ambiguity in the Toronto by-laws*, these limits are approximate, and the actual sound level limit on any given day will be at the sole discretion of The Danforth Music Hall's management and house sound engineer. *The by-laws place restrictions on levels outside the venue not inside. Management will monitor the levels outside.

MICROPHONES

- 2 x Shure SLX Wireless with SM58 Capsules
- 2 x Sennheiser EW500 G3 Wireless with 935 Capsules
- 13 x Shure SM58
- 1 x Shure Beta 91
- 1 x Sennheiser e602
- 1 x Sennheiser e902
- 8 x Sennheiser e904
- 3 x Sennheiser e614
- 1 x Sennheiser MK4
- 2 x Sennheiser MD421II
- 2 x Sennheiser e906
- 1 x Sennheiser e905
- 6 x Radial Pro DI (passive)
- 4 x J48 DI (Active)
- 2 x PG48 Switch mic

LIGHT SPECS

⚡ POWER

- 200 Amp 3 Phase Stage Right (House)
- 100 Amp 3 Phase Stage Right (Guest)

🎛️ CONSOLE

- Grand MA LITE

🎪 FOH TRUSS

- 6 x 36 Degree Source Four Lekos
- 4 x Martin 250 Wash
- 12 x 1k Medium Parcan
- 2 x Blinders

🎪 MS TRUSS

- 12 x 1k Narrow Parcan
- 2 x Martin 700 Profile
- 4 x 19 Degree Source Four Leko
- 4 x Elation ZW19 Moving Wash

🎪 US TRUSS

- 4 x Martin 700 Profile
- 12 x X Focus Blast LED wall washer
- 12" 2 x Elation ZW19

☀️ DIMMERS

- 2 x Leprechaun 2 x 2.4k
- 1 x Hazer

*** NO SPOTLIGHT IN HOUSE

VIDEO SPECS

- 🎥 • 1 x 12" Box Truss on 3 x 1 Ton Motors for Video Wall

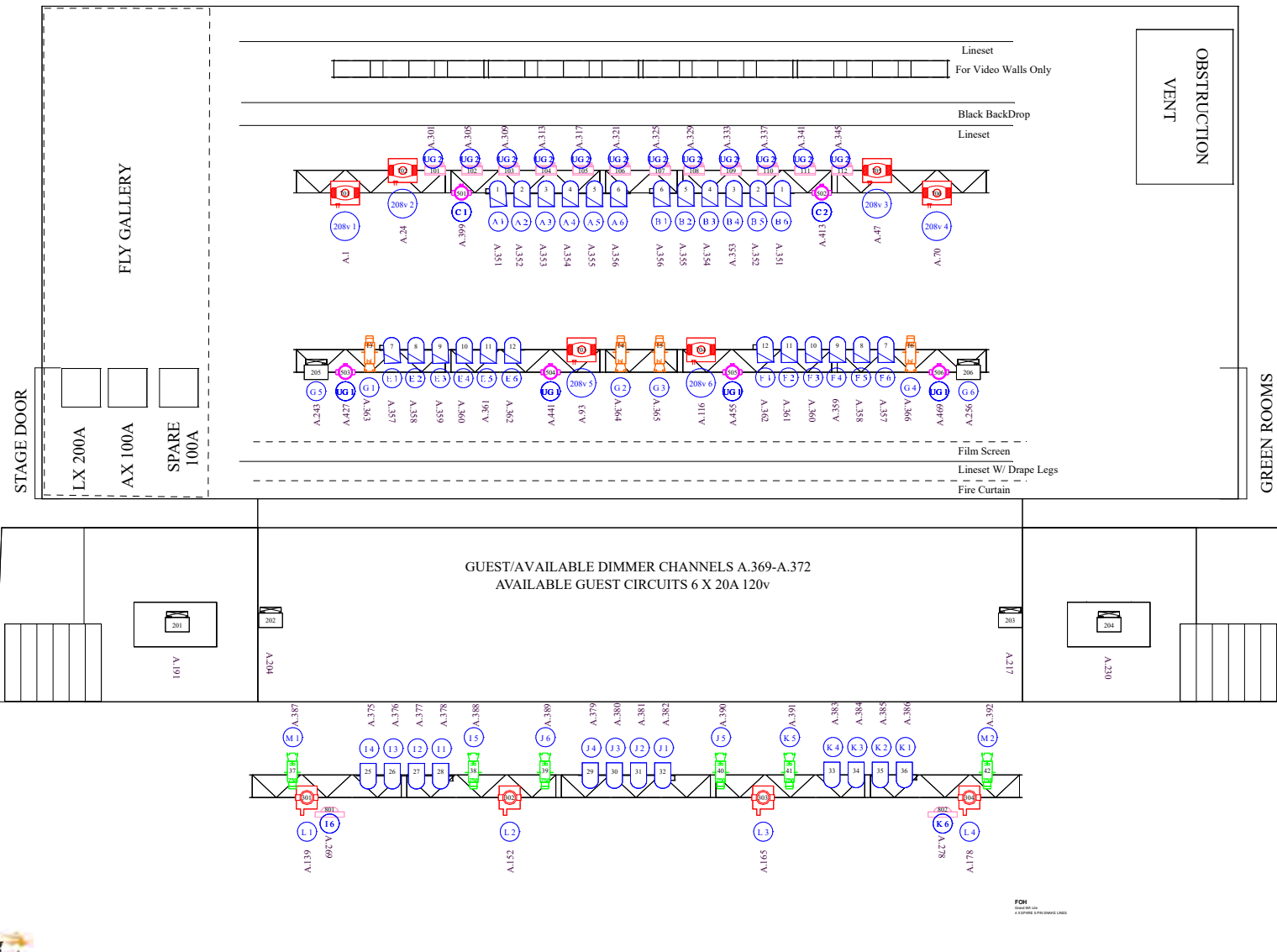
... PLEASE NOTE THAT RIGGING IS NOT ALLOWED IN OUR VENUE ...





THE DANFORTH MUSIC HALL

4 x Palco Mobile Available for Floor



TYPE	UNIT	PATCH	LENS	NOTES
PAR 64	1	A.351		
PAR 64	2	A.352		
PAR 64	3	A.353		
PAR 64	4	A.354		
PAR 64	5	A.355		
PAR 64	6	A.356		
PAR 64	7	A.357		
PAR 64	8	A.358		
PAR 64	9	A.359		
PAR 64	10	A.360		
PAR 64	11	A.361		
PAR 64	12	A.362		
CE SOURCE 4 750 13		A.363	19 DEGREE	
CE SOURCE 4 750 14		A.364	19 DEGREE	
CE SOURCE 4 750 15		A.365	19 DEGREE	
CE SOURCE 4 750 16		A.366	19 DEGREE	
PAR 64	25	A.375		
PAR 64	26	A.376		
PAR 64	27	A.377		
PAR 64	28	A.378		
PAR 64	29	A.379		
PAR 64	30	A.380		
PAR 64	31	A.381		
PAR 64	32	A.382		
PAR 64	33	A.383		
PAR 64	34	A.384		
PAR 64	35	A.385		
PAR 64	36	A.386		
CE SOURCE 4 750	37	A.387	36 DEGREE	
CE SOURCE 4 750	38	A.388	36 DEGREE	
CE SOURCE 4 750	39	A.389	36 DEGREE	
CE SOURCE 4 750	40	A.390	36 DEGREE	
CE SOURCE 4 750	41	A.391	36 DEGREE	
CE SOURCE 4 750	42	A.392	36 DEGREE	
GENERIC RGB	101	A.301	STANDARD	3 CH. MODE W/ VIRTUAL DIMMER

TYPE	UNIT	PATCH	LENS	NOTES
GENERIC RGB	102	A.305	STANDARD3	CH. MODE W/ VIRTUAL DIMMER
GENERIC RGB	103	A.309	STANDARD3	CH. MODE W/ VIRTUAL DIMMER
GENERIC RGB	104	A.313	STANDARD3	CH. MODE W/ VIRTUAL DIMMER
GENERIC RGB	105	A.317	STANDARD3	CH. MODE W/ VIRTUAL DIMMER
GENERIC RGB	106	A.321	STANDARD3	CH. MODE W/ VIRTUAL DIMMER
GENERIC RGB	107	A.325	STANDARD3	CH. MODE W/ VIRTUAL DIMMER
GENERIC RGB	108	A.329	STANDARD3	CH. MODE W/ VIRTUAL DIMMER
GENERIC RGB109		A.333	STANDARD3	CH. MODE W/ VIRTUAL DIMMER
GENERIC RGB110		A.337	STANDARD3	CH. MODE W/ VIRTUAL DIMMER
GENERIC RGB111		A.341	STANDARD3	CH. MODE W/ VIRTUAL DIMMER
GENERIC RGB112		A.345	STANDARD3	CH. MODE W/ VIRTUAL DIMMER
PALCO 3 MOBILE201		A.191	8 DEGREE	
PALCO 3 MOBILE202		A.204	8 DEGREE	
PALCO 3 MOBILE203		A.217	8 DEGREE	
PALCO 3 MOBILE204		A.230	8 DEGREE	
PALCO 3 MOBILE205		A.243	8 DEGREE	
PALCO 3 MOBILE206		A.256	8 DEGREE	
MAC 250 WASH301		A.139	STANDARD	STANDARD MODE
MAC 250 WASH302		A.152	STANDARD	STANDARD MODE
MAC 250 WASH303		A.165	STANDARD	STANDARD MODE
MAC 250 WASH304		A.178	STANDARD	STANDARD MODE
ELATION ZW19501		A.399		14 CH. MODE
ELATION ZW19502		A.413		14 CH. MODE
ELATION ZW19503		A.427		14 CH. MODE
ELATION ZW19504		A.441		14 CH. MODE
ELATION ZW19505		A.455		14 CH. MODE
ELATION ZW19506		A.469		14 CH. MODE
MAC700	701	A.1	STANDARD	STANDAR MODE
MAC700	702	A.24	STANDARD	STANDAR MODE
MAC700	703	A.93	STANDARD	STANDAR MODE
MAC700	704	A.116	STANDARD	STANDAR MODE
MAC700	705	A.47	STANDARD	STANDAR MODE
MAC700	706	A.70	STANDARD	STANDAR MODE
ELATION CUEPIX WW4801		A.269		9 CH. STANDARD MODE
ELATION CUEPIX WW4802		A.278		9 CH. STANDARD MODE



THE
DANFORTH
MUSIC HALL

GENERAL ADMISSION SETUP



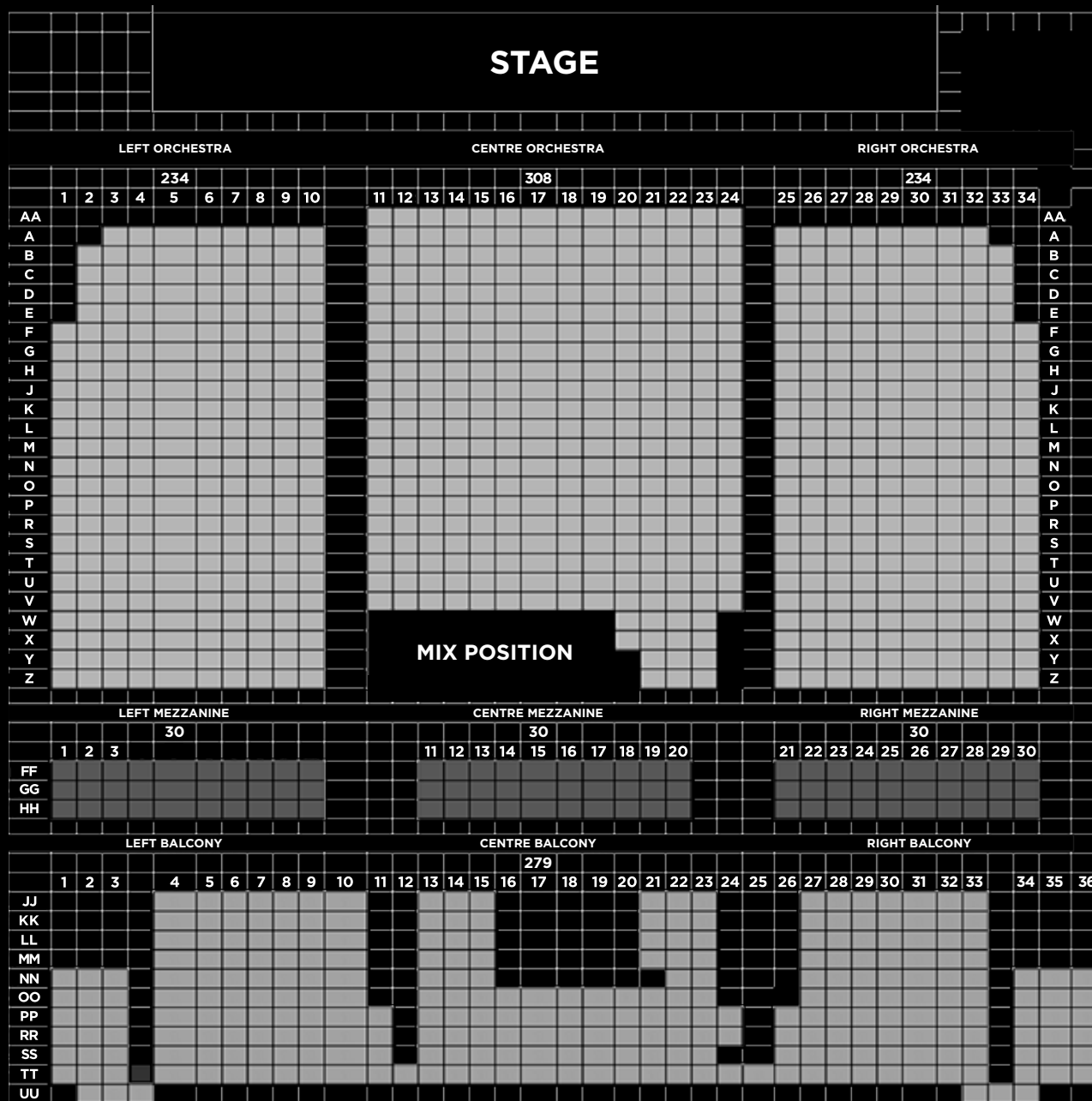


THE
DANFORTH
MUSIC HALL

RESERVED SEATING SETUP



RESERVED SEATING MAP



RENTAL PRICING

GENERAL ADMISSION FLOOR (19+): \$ 7,500.00

RESERVED SEAT FLOOR: \$ 12,500.00

INCLUDED SERVICES: IN-HOUSE SOUND & LIGHT, VENUE TECHNICAL DIRECTOR,
FOH STAFF (F&B, TICKET TAKERS, USHERS, COAT/BAG CHECK, EMS AND HOUSE SECURITY)

MERCHANDISE SPLIT: 80 ARTIST/20 VENUE, 100 ARTIST ON RECORDED, ARTIST SELLS

PRODUCTION AND OPERATING EXPENSES (MANDATORY)

FOH, MONITOR AND LIGHTING TECHNICIAN: \$500 PER TECH (MAXIMUM 12 HOUR/DAY)

BOX OFFICE STAFF: \$ 300.00

BARRICADE – GA FLOOR ONLY: \$ 500.00

ALL AGES FEE: \$ 2,500.00

PRODUCTION AND OPERATING EXPENSES (AS REQUIRED)

ADDITIONAL CLEANING FEE (EG. CONFETTI, SPARKLES, ETC.): \$ 500.00

ADDITIONAL BACKSTAGE/BUS SECURITY: \$50/HOUR PER GUARD (MINIMUM 4 HOURS)

MEET & GREET EXPERIENCE (90 MIN): \$ 500.00

PIT SECURITY (AT VENUE DISCRETION): \$50/HOUR PER GUARD (MINIMUM 4 HOURS)

ORIGINATION FEE: \$2,500 (NEGOTIABLE DEPENDING ON PROJECT)

Please note: All prices are subject to applicable taxes including 13% HST.



CONTACT US

MAIN NUMBER

416-778-8163

GENERAL MANAGER

CAMERON WRIGHT

CAMERON@THEDANFORTH.COM

EVENTS MANAGER

JENIFER FOX

JENIFER@THEDANFORTH.COM

OPERATIONS MANAGER

TANYA TONON

TANYA@THEDANFORTH.COM

TECHNICAL DIRECTOR

LUKE PURCHASE

LUKE@THEDANFORTH.COM

RENTAL RATES/INFO

Please send event dates, questions, comments to: **CAMERON@THEDANFORTH.COM**



THE
DANFORTH
MUSIC HALL

147 DANFORTH AVE

416-778-8163

**INFO@THEDANFORTH.COM
THEDANFORTH.COM**