

THE
DANFORTH
MUSIC HALL

THEDANFORTH.COM

NOV 4 CHANCE THE RAPPER
NOV 5 MATT NATHANSON
NOV 8 RED BULL THRE3STYLE
NOV 9 HANSON
NOV 14 DARK STAR ORCHESTRA

THE
DANFORTH
MUSIC HALL

TONIGHT
JOEL PLASKETT
BUY TICKETS NOW
WWW.TICKETMASTER.CA



GENERAL INFO

CAPACITY 

**GENERAL
ADMISSION: 1448** TOTAL

1058 main floor, 90 mezzanine, 300 balcony

SEATED: 1167 TOTAL

776 main floor, 90 mezzanine, 300 balcony



BOX OFFICE & TICKETING

Street Level Box Office open 1.5 hours prior to door time. Sold through The Danforth Music Hall's account with **TICKETMASTER.**

PAST EVENTS



BILLY TALENT



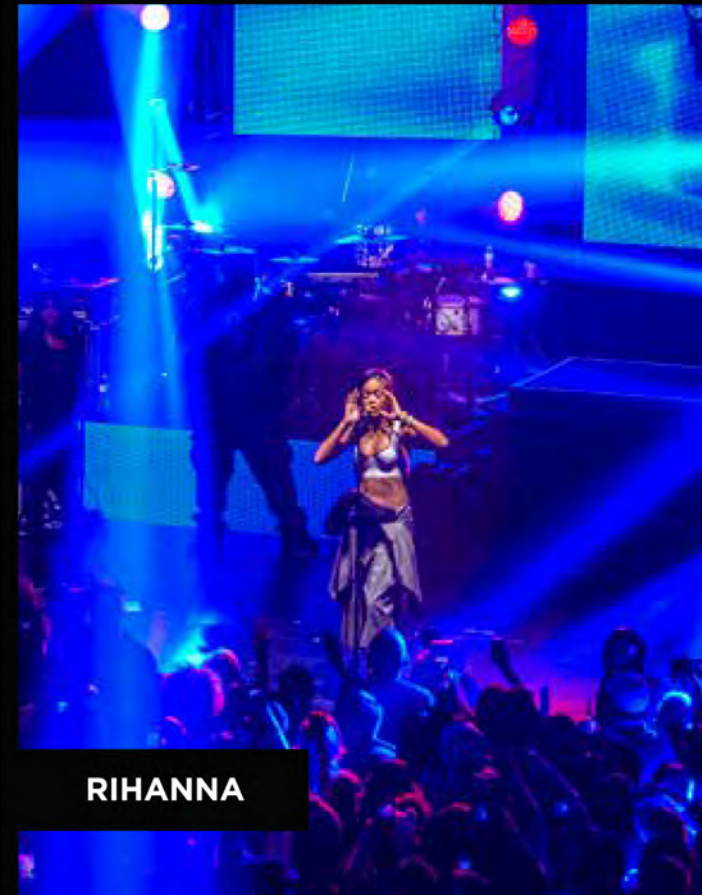
JULY TALK



JUSTIN BIEBER



ORVILLE PECK



RIHANNA

OUR FACILITIES

BARS

4 bars on Main Floor, Full bar on 2nd floor

FULLY LICENSED VENUE

ACCESSIBILITY

There are no steps at entrance.
Accessible seating is available

***** THERE ARE NO ACCESSIBLE WASHROOMS**

TERMS

Intermission: Mandatory or Penalty

\$2500 + HST Deposit

Merchandise Rate: 20% House 80% artist on soft goods

50% deposit on Signing Venue License Agreement

Damage Deposit required

\$5,000,000 of Public Liability Insurance

Advertising available through Social Media,

Mailing List, and Venue Lightbox

LOAD AREA

- There is a 24 hour Motor Coach zone on the south side of Danforth Ave, Right in front of the venue. Motorcoach zone is 90' long and 7' wide. Please Note that there is a bike lane between Bus parking and sidewalk!
- Venue does not have on site parking. Street parking or lot parking is the responsibility of the promoter.
- Load in is through front door. Push through lobby into main room up a ramp to the stage. Push from front door to stage is 100'

WIRELESS THROUGHOUT

DRESSING ROOMS

- **UPPER 1** 6 person, Fridge, Serving Area, 2 couches, 3 tables, 12'x12'
- **UPPER 2** 1 person, Private Shower, 8' x 7'

- **LOWER 1** 4 person, couch, table, mirror, 11' x 6'
- **LOWER 2** 2 person, chairs, sink, mirror, 9' x 7'
- **LOWER 3** 2 person, chairs, 9' x 5.5'

TOUR PRODUCTION

- Backstage 9' x 6'

TOUR MANAGER / PROMOTER

- Backstage 8' x 5'

BACKSTAGE

- 2 Private Washrooms with 2 sinks

ROOM SPECS

STAGE SPECS

FIRE CURTAIN LINE 11' UPSTAGE OF STAGE SKIRT

Wood Vaneer House / Stage Depth = **32' 1"**

Width @ Proscenium = **39' 7"**

Proscenium Height = **24' 4"** @ Centre

Apron Width = **49' 3"** / Apron = **8'**

Stage skirt to center seat (pit) = **5'**

Stage skirt to seat shortest distance = **3'**

Stage Width Total Back Wall width = **49' 4"**

Pipe #3 to Back Wall for Vid Projector = **18' 7"**

Grid Height = **58'** / Rigging = Yes, 3 fly pipes

2 x **16"** Box Truss on 1/2 Ton Motors

HOUSE SPECS

Stage Skirt To F.O.H = **70' 3"**

House Width at Stage **50' 5"**

Mid House Width **72'**

House Width at F.O.H **72' 3"**

House Height @ C **27' 8"**

1 x FOH **16"** Box Truss
on 2 x 1/2 Ton Motors

ELECTRICAL - STAGE RIGHT

Lighting = **100 amp** service, 3 phase

Audio = **100 amp** service, 3 phase

Additional **200 amp** guest service

Voltage = **120/208**

Cycles = **60**

AUDIO SPECS

⚡ POWER

- 100 Amp 3 Phase



MAIN PA SYSTEM

- Console - Avid Profile
- 24 x L'Acoustic Kara II
- 8 x L'Acoustic SB218 (4 per side)
- 2 x L'Acoustic Arc Wide front fills
- 4 x Adamson CB-1 Balcony Fill
- 1 x L'Acoustic LA 4 amplifier for fills

GEAR

- 15 x K&M Tall Boom Mic Stands
- 15 x K&M Short Boom Mic Stands
- 3 x Round Base Straight Mic Stands
- 4 x Clear Com Headsets

STAGING

4 x 4' x 8' Risers
12", 16" Legs

MONITORS

- 1 x Avid SC48 Digital Mixing Console
- 12 x L'Acoustic x15 monitors
- 12 x Mixes incl. Listen on LA 8 Amplifiers
- Yorkville Self-Powered Single 18" Drum Sub
- 48 Ch Veam 3-way Isolated Split Snake System
- 6 x 12 Channel CPC Sub-Snake Boxes (5 Cables)
- Sidefills: 2 x PRG 2x18C
- 2 x L'Acoustic Arc (one per side)

SOUND LEVEL LIMITS

The venue has a VERY STRICT 11pm Sound Curfew
The Danforth Music Hall has sound level limits which are measured at FOH: 110dBc or 103 dBa, whichever is lesser.

Due to the ambiguity in the Toronto by-laws*, these limits are approximate, and the actual sound level limit on any given day will be at the sole discretion of The Danforth Music Hall's management and house sound engineer. *The by-laws place restrictions on levels outside the venue not inside. Management will monitor the levels outside.

MICROPHONES

- 2 x Shure SLX Wireless with SM58 Capsules
- 2 x Sennheiser EW500 G3 Wireless with 935 Capsules
- 13 x Shure SM58
- 1 x Shure Beta 91
- 1 x Sennheiser e602
- 1 x Sennheiser e902
- 8 x Sennheiser e904
- 3 x Sennheiser e614
- 1 x Sennheiser MK4
- 2 x Sennheiser MD421II
- 2 x Sennheiser e906
- 1 x Sennheiser e905
- 6 x Radial Pro DI (passive)
- 4 x J48 DI (Active)
- 2 x PG48 Switch mic
- 6 x Sennheiser SM57

LIGHT SPECS

⚡ POWER

- 100 Amp 3 Phase Stage Right (House)
- 200 Amp 3 Phase Stage Right (Guest)

🎛️ CONSOLE

- Grand MA 2 Full Size

🦋 FOH TRUSS

- 6 x 36 Degree Source Four Lekos
- 6 x Elation ZW19 Moving Wash
- 2 x Blinders

🦋 MS TRUSS

- Rogue RX2 Spot
- 2 x Martin 700 Profile
- 4 x 19 Degree Source Four Leko
- 6 x Elation ZW19 Moving Wash

🦋 US TRUSS

- 4 x Martin 700 Profile
- 12 x X Focus Blast LED wall washer
- 6 x Elation ZW19
- 4 x Mac 250 Wash

☼ DIMMERS

- 2 x Leprechaun 2 x 2.4k
- 1 x Hazer

*** NO SPOTLIGHT IN HOUSE

VIDEO SPECS

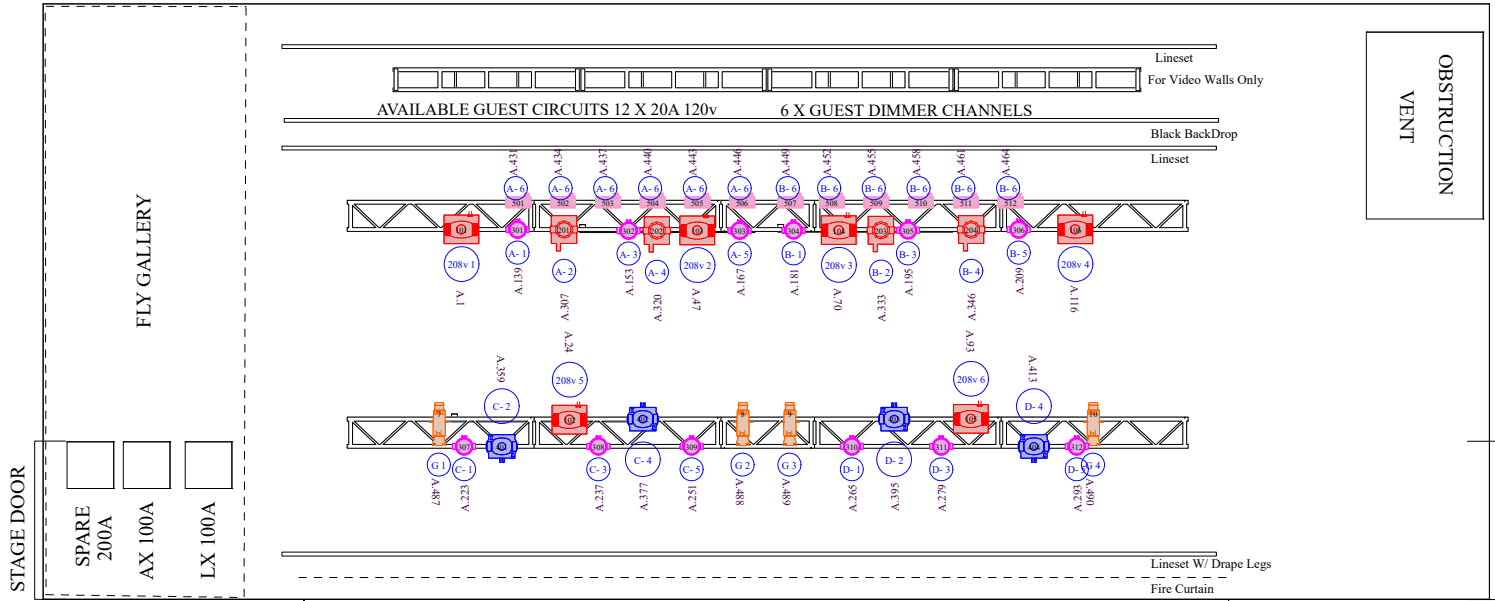
- 🎥 • 1 x 12" Box Truss on 3 x 1 Ton Motors for Video Wall

••• PLEASE NOTE THAT RIGGING IS NOT ALLOWED IN OUR VENUE •••



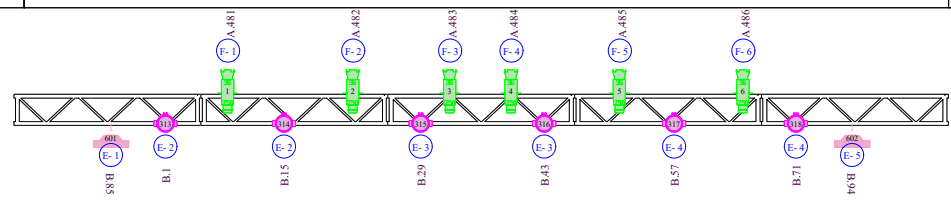


THE DANFORTH MUSIC HALL



Symbol	Name	Count	Lens
	Mac 700	6	Standard
	Mac 250 Wash	4	Standard
	Elation ZW19	18	
	Elation Cuepix WW4	2	
	CE Source 4 750	4	19 Degree
	CE Source 4 750	6	36 Degree
	Generic RGB	12	Standard
	Rogue R2X Spot	4	

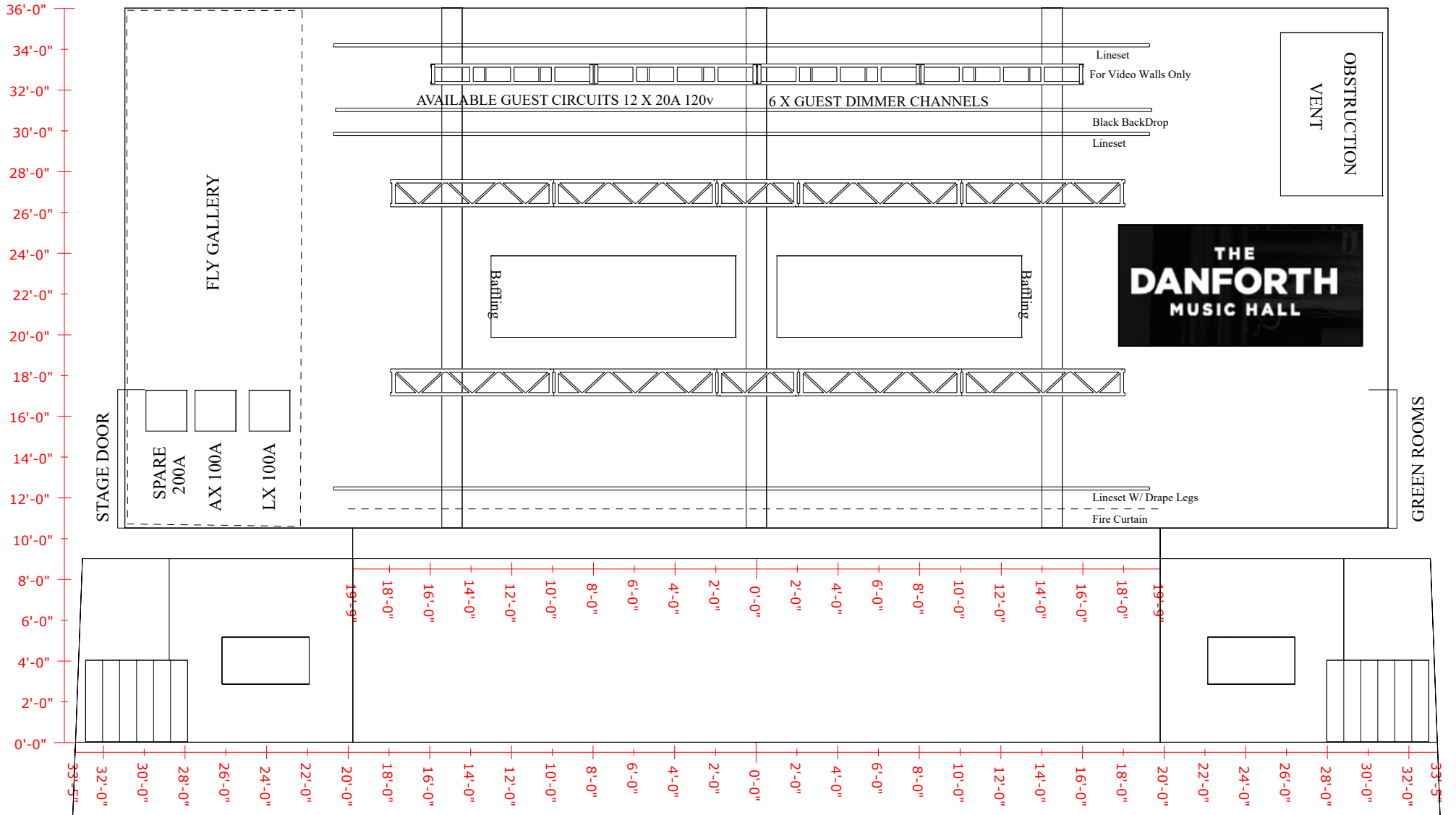
FOH
 Grand MA2 Fullsize
 2 X SPARE 5 PIN SNAKE LINES



DMH FEB '24

Type	Unit	Patch	Lens	Notes
CE Source 4 750	1	A.481	36 Degree	
CE Source 4 750	2	A.482	36 Degree	
CE Source 4 750	3	A.483	36 Degree	
CE Source 4 750	4	A.484	36 Degree	
CE Source 4 750	5	A.485	36 Degree	
CE Source 4 750	6	A.486	36 Degree	
CE Source 4 750	7	A.487	19 Degree	
CE Source 4 750	8	A.488	19 Degree	
CE Source 4 750	9	A.489	19 Degree	
CE Source 4 750	10	A.490	19 Degree	
Mac 700	101	A.1	Standard	Standard Mode
Mac 700	102	A.24	Standard	Standard Mode
Mac 700	103	A.47	Standard	Standard Mode
Mac 700	104	A.70	Standard	Standard Mode
Mac 700	105	A.93	Standard	Standard Mode
Mac 700	106	A.116	Standard	Standard Mode

Type	Unit	Patch	Lens	Notes
Mac 250 Wash	201	A.307	Standard	Standard Mode
Mac 250 Wash	202	A.320	Standard	Standard Mode
Mac 250 Wash	203	A.333	Standard	Standard Mode
Mac 250 Wash	204	A.346	Standard	Standard Mode
Elation ZW19	301	A.139		14 Ch. Mode
Elation ZW19	302	A.153		14 Ch. Mode
Elation ZW19	303	A.167		14 Ch. Mode
Elation ZW19	304	A.181		14 Ch. Mode
Elation ZW19	305	A.195		14 Ch. Mode
Elation ZW19	306	A.209		14 Ch. Mode
Elation ZW19	307	A.223		14 Ch. Mode
Elation ZW19	308	A.237		14 Ch. Mode
Elation ZW19	309	A.251		14 Ch. Mode
Elation ZW19	310	A.265		14 Ch. Mode
Elation ZW19	311	A.279		14 Ch. Mode
Elation ZW19	312	A.293		14 Ch. Mode



THE
DANFORTH
MUSIC HALL

GENERAL ADMISSION SETUP





THE
DANFORTH
MUSIC HALL

RESERVED SEATING SETUP



STAGE

LEFT ORCHESTRA - 234

CENTRE ORCHESTRA - 308

RIGHT ORCHESTRA - 234

	1	2	3	4	5	6	7	8	9	10	11	12	13	14	15	16	17	18	19	20	21	22	23	24	25	26	27	28	29	30	31	32	33	34					
AA																																						AA	
A																																						A	
B																																						B	
C																																						C	
D																																						D	
E																																						E	
F																																						F	
G																																						G	
H																																						H	
J																																						J	
K																																						K	
L																																						L	
M																																						M	
N																																							N
O																																							O
P																																							P
R																																							R
S																																							S
T																																							T
U																																							U
V																																							V
W																																							W
X																																							X
Y																																							Y
Z																																							Z

MIX
POSITON

LEFT MEZZANINE - 30

CENTRE MEZZANINE - 30

RIGHT MEZZANINE - 30

	1	2	3	4	5	6	7	8	9	10	11	12	13	14	15	16	17	18	19	20	21	22	23	24	25	26	27	28	29	30								
FF																																					FF	
GG																																						GG
HH																																						HH

LEFT BALCONY - 101

CENTRE BALCONY - 98

RIGHT BALCONY - 101

				4	5	6	7	8	9	10	11	12	13	14	15					21	22	23	24	25	26	27	28	29	30	31	32												
JJ				4	5	6	7	8	9	10	11	12	13	14	15					21	22	23	24	25	26	27	28	29	30	31	32								JJ				
KK				4	5	6	7	8	9	10	11	12	13	14	15					21	22	23	24	25	26	27	28	29	30	31	32									KK			
LL				4	5	6	7	8	9	10	11	12	13	14	15					21	22	23	24	25	26	27	28	29	30	31	32									LL			
MM				4	5	6	7	8	9	10	11	12	13	14	15					21	22	23	24	25	26	27	28	29	30	31	32									MM			
NN	1	2		4	5	6	7	8	9	10	11	12	13	14	15					21	22	23	24	25	26	27	28	29	30	31	32		33	34					NN				
OO	1	2	3	4	5	6	7	8	9	10	11	12	13	14	15	16	17	18	19	20	21	22	23	24	25	26	27	28	29	30		31	32	33					OO				
PP	1	2	3	4	5	6	7	8	9	10	11	12	13	14	15	16	17	18	19	20	21	22	23	24	25	26	27	28	29	30	31		33	34	35					PP			
RR	1	2	3	4	5	6	7	8	9	10	11	12	13	14	15	16	17	18	19	20	21	22	23	24	25	26	27	28	29	30	31		33	34	35					RR			
SS	1	2	3	4	5	6	7	8	9	10	11	12	13	14	15	16	17	18	19	20	21	22	23	24	25	26	27	28	29	30	31		33	34	35					SS			
TT	1	2	3	4	5	6	7	8	9	10	11	12	13	14	15	16	17	18	19	20	21	22	23	24	25	26	27	28	29	30	31	32		33	34	35					TT		
UU		1	2	3																																16	17	18		UU			

RENTAL PRICING

GENERAL ADMISSION FLOOR (19+): \$ 7,500.00

RESERVED SEAT FLOOR: \$ 12,500.00

INCLUDED SERVICES: IN-HOUSE SOUND & LIGHT, VENUE TECHNICAL DIRECTOR,
FOH STAFF (F&B, TICKET TAKERS, USHERS, COAT/BAG CHECK, EMS AND HOUSE SECURITY)

MERCHANDISE SPLIT: 80 ARTIST/20 VENUE, 100 ARTIST ON RECORDED, ARTIST SELLS

PRODUCTION AND OPERATING EXPENSES (MANDATORY)

FOH, MONITOR AND LIGHTING TECHNICIAN: \$500 PER TECH (MAXIMUM 12 HOUR/DAY)

BOX OFFICE STAFF: \$ 300.00

BARRICADE - GA FLOOR ONLY: \$ 500.00

ALL AGES FEE: \$ 2,500.00

PRODUCTION AND OPERATING EXPENSES (AS REQUIRED)

ADDITIONAL CLEANING FEE (EG. CONFETTI, SPARKLES, ETC.): \$ 500.00

ADDITIONAL BACKSTAGE/BUS SECURITY: \$50/HOUR PER GUARD (MINIMUM 4 HOURS)

MEET & GREET EXPERIENCE (90 MIN): \$ 500.00

PIT SECURITY (AT VENUE DISCRETION): \$50/HOUR PER GUARD (MINIMUM 4 HOURS)

ORIGINATION FEE: \$2,500 (NEGOTIABLE DEPENDING ON PROJECT)

Please note: All prices are subject to applicable taxes including 13% HST.

CONTACT US

MAIN NUMBER

416-778-8163

GENERAL MANAGER

CAMERON WRIGHT

CAMERON@THEDANFORTH.COM

SR OPERATIONS MANAGER

JENIFER FOX

JENIFER@THEDANFORTH.COM

SR OPERATIONS MANAGER

TANYA TONON

TANYA@THEDANFORTH.COM

TECHNICAL DIRECTOR

LUKE PURCHASE

LUKE@THEDANFORTH.COM

RENTAL RATES/INFO

Please send event dates, questions, comments to: **CAMERON@THEDANFORTH.COM**

THE MUSIC HALL

TONIGHT
THE HEAD & THE HEART
BUY TICKETS NOW
WWW.TICKETMASTER.CA

NOV 1 DAVE ATTELL
NOV 2 JOEL PLASKETT
NOV 4 CHANCE THE RAPPER
NOV 5 MATT NATHANSON
NOV 8 RED BULL THRE3 STYLE

THE DANFORTH
MUSIC HALL

THE
DANFORTH
MUSIC HALL

147 DANFORTH AVE
416-778-8163
INFO@THEDANFORTH.COM
THEDANFORTH.COM